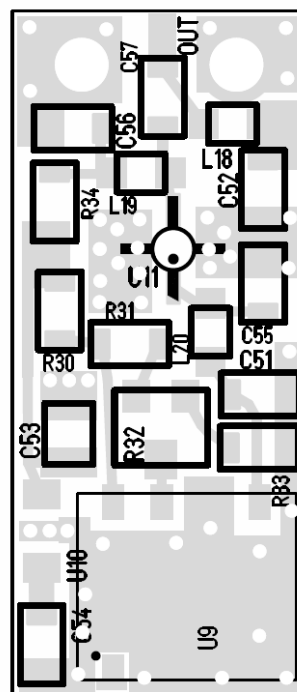


# DEM L10MOSC

## Standalone 10 MHz Oscillator

Do you need an emergency spare 10 MHz source when roving? Or what about a source for testing on your work bench? This is a simple device with a quality VCTCXO that may be calibrated to a GPS standard. It is enclosed in a 1.8" x 1.0" x 0.85" (excluding the RF connector) and is powered by any 7.0VDC to 21VDC supply either through the RF connector or a DC feed through. It has approximately a +10 dBm sine wave output as standard but optional levels can be ordered as with connector types.



Order Part # L10MOSC, specify connector type, N, SMA, or BNC

**\$45.00**